

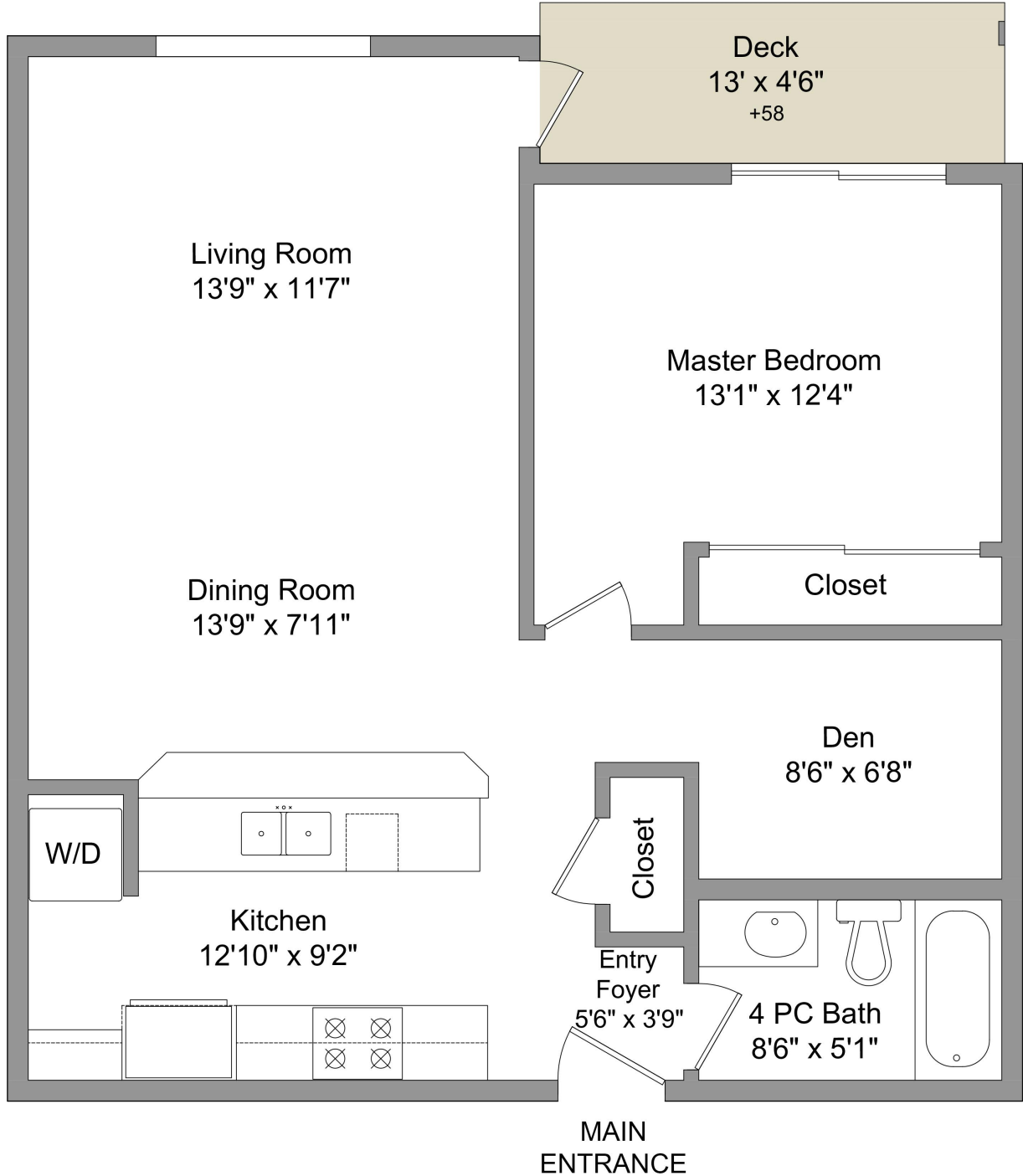


THE  
**RE/MAX**  
COLLECTION<sup>®</sup>



**SEB KAISER**  
PERSONAL REAL ESTATE CORPORATION  
RE/MAX CAMOSUN

**Main Floor**  
798 Sqft.  
(Avg Ht. - 8')



**317-2829 Peatt Rd.**  
*This floor-plan was created for the exclusive use of  
Seb Kaiser PREC with RE/MAX Camosun  
Area and dimensions are approximate, buyer to verify on site.*

FLOOR	AREA (Sq. Ft.)		
	Finished	Unfinished	Garage
Main	798	58	
Total	798	58	

**ALL-IN-ONE**  
REAL ESTATE PHOTOGRAPHY SOLUTIONS

(250) 298-0857  
All-In-OneREPS@shaw.ca  
www.RealEstatePhotosVictoria.com